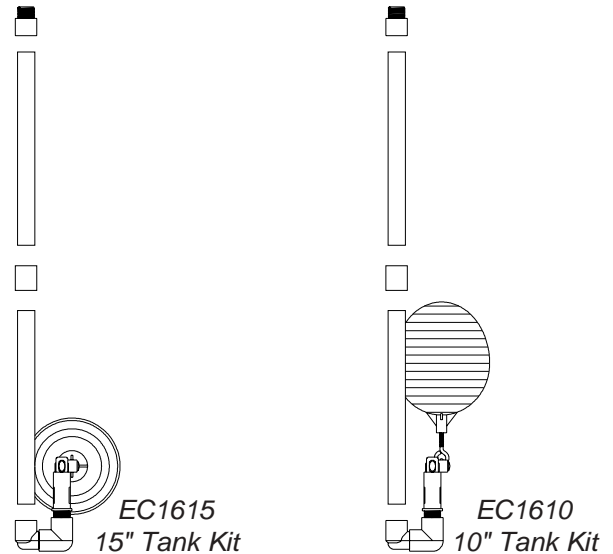


## Float Valve Kit

EC1610 • EC1615

### Each Float Valve Kit includes:

- 1 - 3/4" Float Valve
- 1 - 6" dia. black plastic float ball
- 1 - 3/4" PVC pipe
- 2 - 90° elbow
- 1 - 3/4" MPT elbow street
- 1 - 3/4" MHT adapter hose
- 2 - 5/16" - 18 x 2" x 1.4" W. U bolts
- 4 - 5/16" - 18 Nylon Wing Nuts



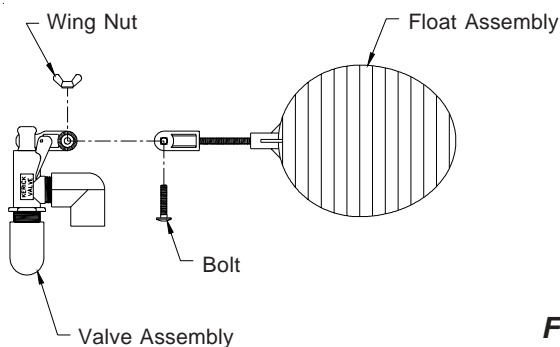
### UNPACKING THE EQUIPMENT

Before beginning installation, check the overall condition of the equipment. Remove packing materials, and examine all components for signs of shipping damage. Any shipping damage is the customer's responsibility and should be reported immediately to the freight carrier.

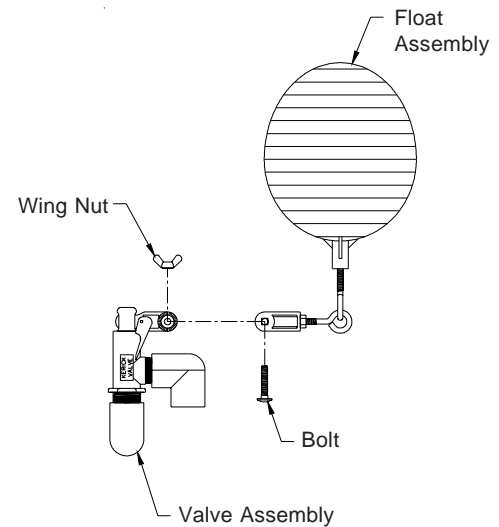
### INSTALLATION INSTRUCTIONS

These float valve instructions depict installation in either a 10" tee or 15" tank kit.

- 1) Remove wing nut and bolt from float assembly and use it to attach the float assembly to the valve assembly. **See Figure 1.**



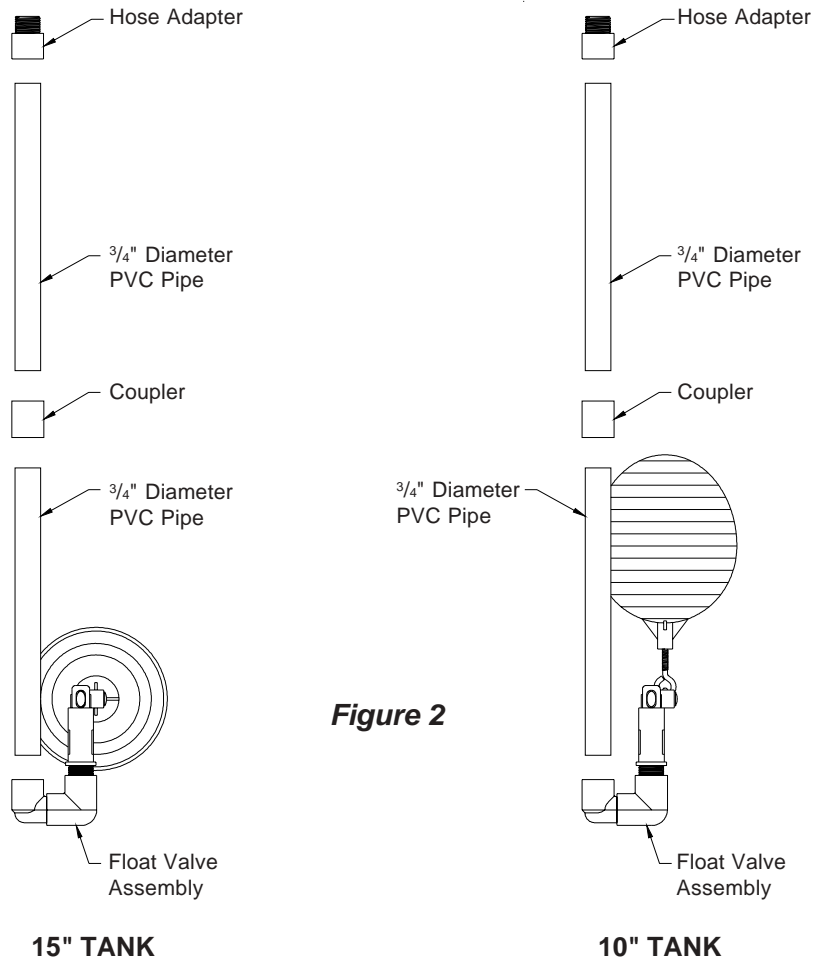
15" TANK



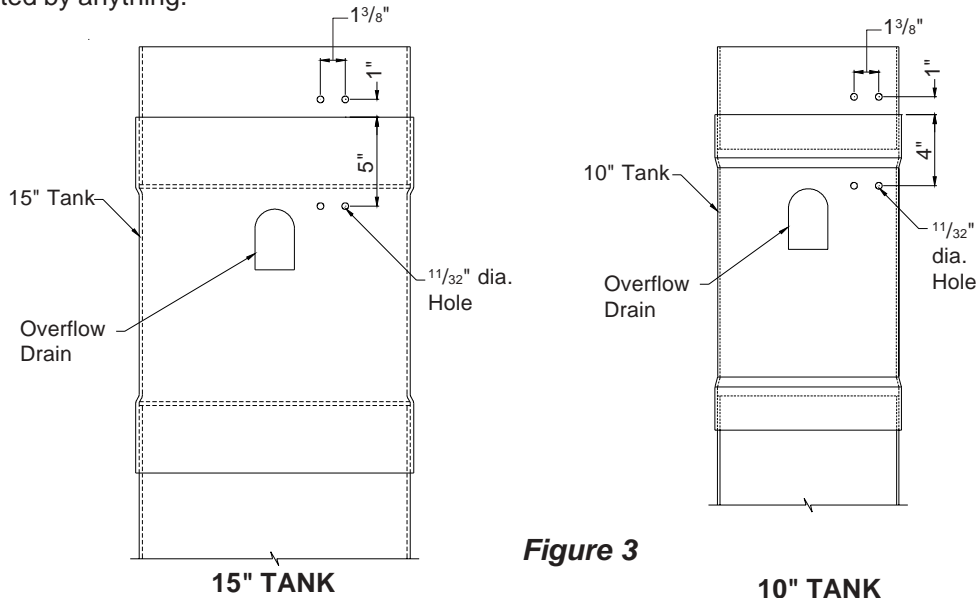
10" TANK

Figure 1

2) Prepare the float valve assembly, pipe, coupler and hose adapter in accordance to PVC primer and cement directions and assemble the float valve assembly, pipe, coupler and hose adapter. **See Figure 2.**

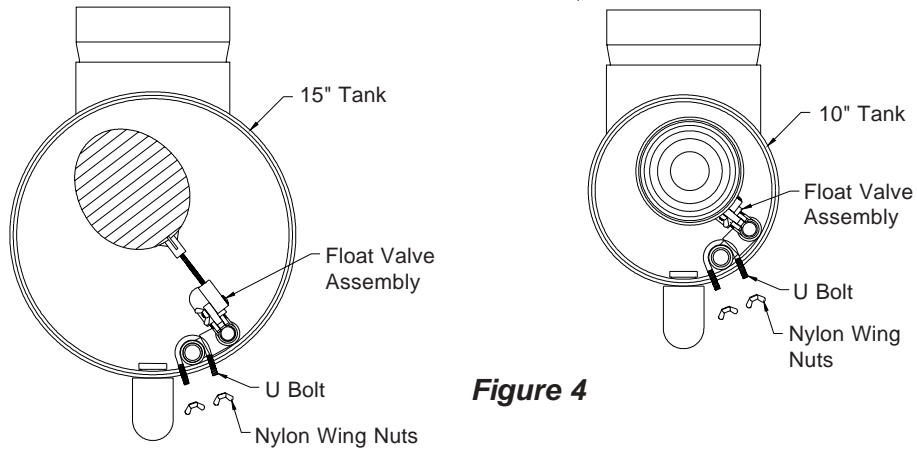


3) On the cooling system tank kit drill (4)  $1\frac{1}{32}$ " dia. holes as shown in **Figure 3**. The holes should be located on the side of the tank kit that is away from the building, and so that the float assembly can swing freely and is not obstructed by anything.



- 4) Slide the float valve assembly into the tank kit tee approximately 18<sup>3</sup>/<sub>4</sub>" for the 15" tank and 25<sup>1</sup>/<sub>4</sub>" for the 10" tank. Fasten in place using (2) U-bolts and (4) nylon wing nuts. **See Figures 4 & 5.**

Position of float valve is approximate, some adjustment may be required to attain proper water level in tank. Proper water level should be approximately 2" below the top of the 8" pipe.

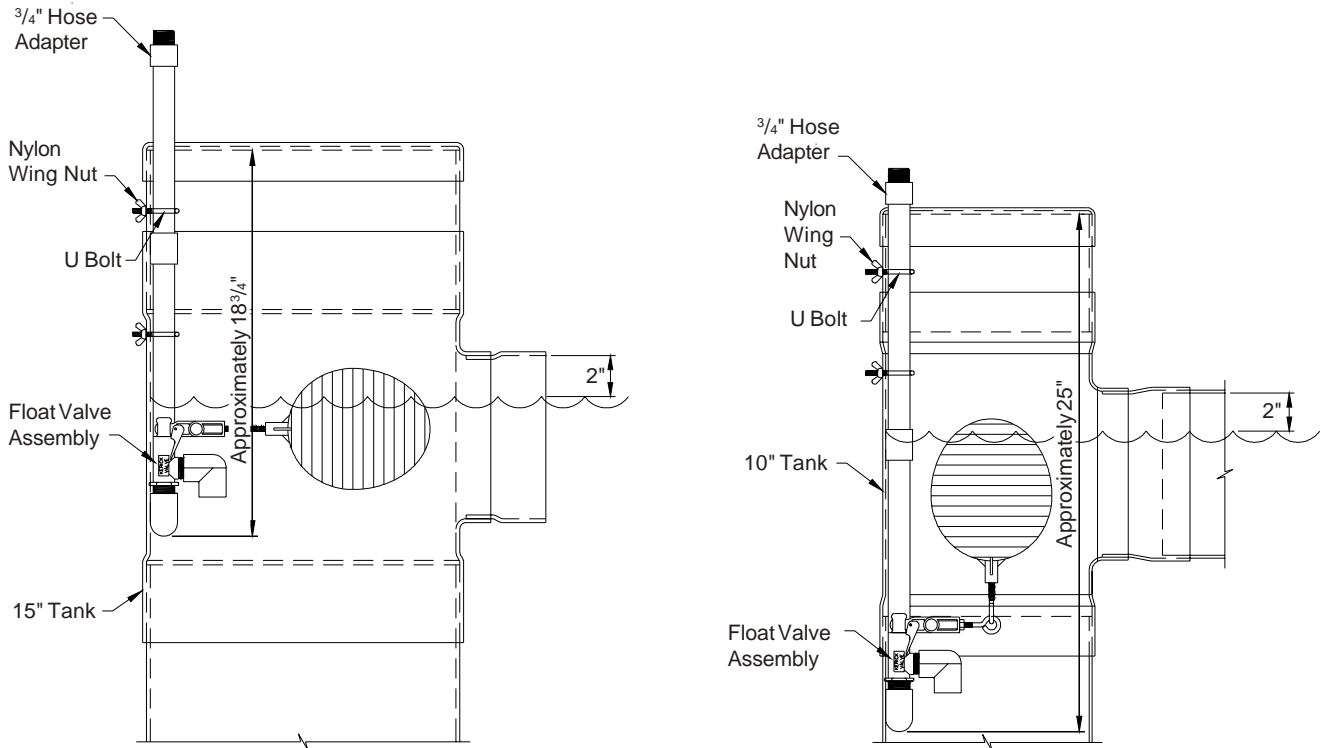


**Figure 4**

**15" TANK**

**10" TANK**

- 5) Installation complete. If a higher water level is needed, loosen wing nuts and raise float assembly and retighten wing nuts. If lower level is needed, lower assembly.



**15" TANK**

**Figure 5  
COMPLETED ASSEMBLY**

**10" TANK**