

Horizon Tunnel Door System

Overview

The HORIZON Tunnel Door system is available for purchase in two kits, each comprising a set of numbered components and actuators.

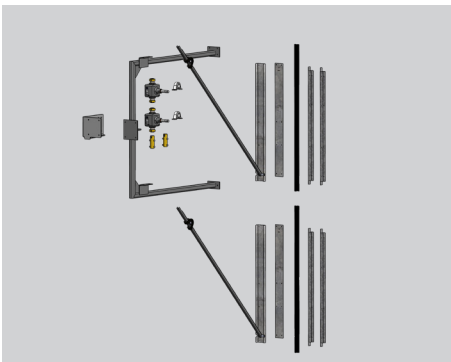
Step 1: Choose Zone or number of rows controlled by a single actuator.

Step 2: Choose the number of Door Kits based on the overall length and height of the opening.

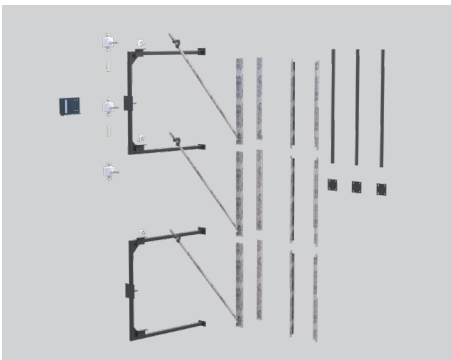
Step 3: Choose Actuator



1-Row Zone Drive Kit



2-Row Zone Drive Kit



3-Row Zone Drive Kit*

Step 1: Zone Drive Kits

The Zone Drive Kits include the mounting hardware, gear converters, couplers and connector pieces for mounting the actuator to the system. The Zone Drive Kit can be ordered with 1, 2 or 3* rows of doors, which allow you to control 1, 2 or 3 rows by a single actuator. Each Zone Drive Kit will require one Actuator to be ordered separately.

TT36ZD-2R
 ———— Number of Rows of Doors (1,2 or 3*)
 ———— Zone Drive Kit
 ———— Height of Door (36", 42", 48")

36 Inch Zone Drive Kits

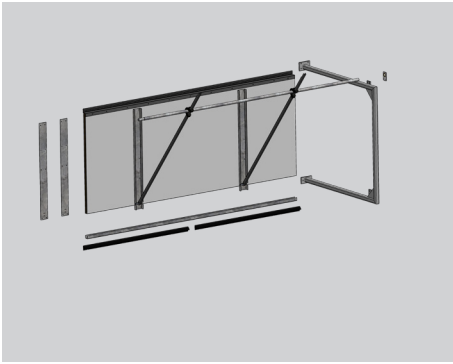
TT36ZD-1R	KIT, TT36 ZONE DRIVE, 1-ROW, 1-ZONE, 36"H
TT36ZD-2R	KIT, TT36 ZONE DRIVE, 2-ROWS, 1-ZONE, 36"H
TT36ZD-3R	KIT, TT36 ZONE DRIVE, 3-ROWS, 1-ZONE, 36"H

42 Inch Zone Drive Kits

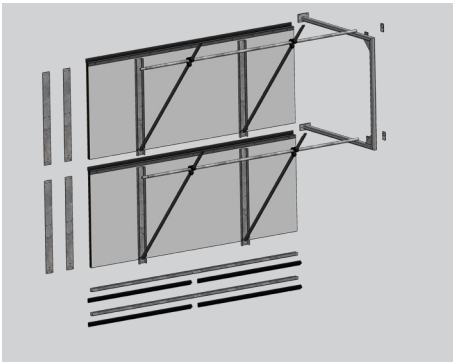
TT42ZD-1R	KIT, TT42 ZONE DRIVE, 1-ROW, 1-ZONE, 42"H
TT42ZD-2R	KIT, TT42 ZONE DRIVE, 2-ROWS, 1-ZONE, 42"H
TT42ZD-3R	KIT, TT42 ZONE DRIVE, 3-ROWS, 1-ZONE, 42"H

48 Inch Zone Drive Kits*

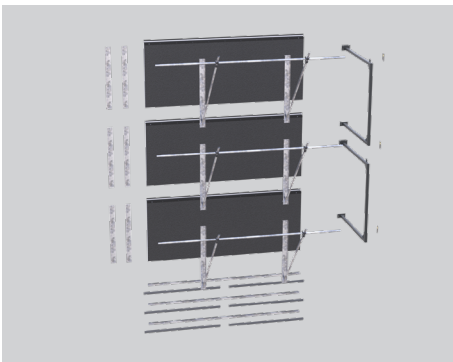
TT48ZD-1R	KIT, TT48 ZONE DRIVE, 1-ROW, 1-ZONE, 48"H
TT48ZD-2R	KIT, TT48 ZONE DRIVE, 2-ROWS, 1-ZONE, 48"H



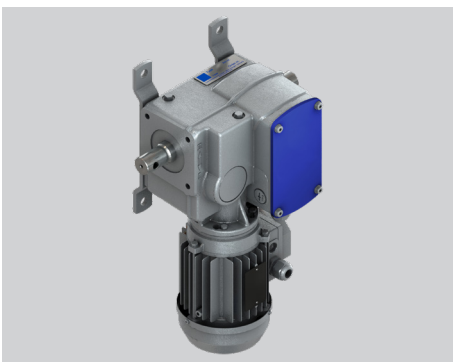
1-Row Door Kit



2-Row Door Kit



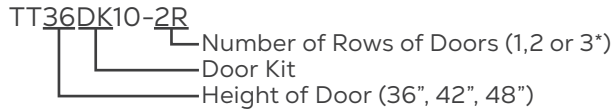
3-Row Door Kit*



LA Actuator

Step 2: Door Kits

Each Door Kit includes all of the door pieces for 10 lineal feet of doors, mounting brackets, rack and pinions to build your door rows. The Door Kits are available in single-row, two-row and three-row kits*.



36 Inch Door Kits

TT36DK10-1R KIT, TT36 DOOR-FRAME-LIFT, 10'L, 1-ROW, 36"H

TT36DK10-2R KIT, TT36 DOOR-FRAME-LIFT, 10'L, 2-ROW, 36"H

TT36DK10-3R KIT, TT36 DOOR-FRAME-LIFT, 10'L, 3-ROW, 36"H

42 Inch Door Kits

TT42DK10-1R KIT, TT42 DOOR-FRAME-LIFT, 10'L, 1-ROW, 42"H

TT42DK10-2R KIT, TT42 DOOR-FRAME-LIFT, 10'L, 2-ROW, 42"H

TT42DK10-3R KIT, TT42 DOOR-FRAME-LIFT, 10'L, 3-ROW, 42"H

48 Inch Door Kits

TT48DK10-1R KIT, TT48 DOOR-FRAME-LIFT, 10'L, 1-ROW, 48"H

TT48DK10-2R KIT, TT48 DOOR-FRAME-LIFT, 10'L, 2-ROW, 48"H

Step 3: Actuators

Actuators are the third and final component needed to complete the system. Choose from 90 Nm (1000 lb) or 250 Nm (2000 lb) drive units. Position encoders can easily be added to any actuator to ensure precise control of your door opening.

Actuators

LA5011-090-70 120V, 1PH, 1000 lb

LA1211-250-70 120V, 1Ph, 2000 lb

LA1243-70 480V, 3ph, 2000 lb

AC1426 Encoder kit

Maximum length per row for the Tunnel Doors:

	90Nm Actuator	250Nm Actuator
TT36 - 1 Row	120 ft/row	150 ft/row
TT36 - 2 Row	Contact Office	60 ft/row
TT42 - 1 Row	110 ft/row	150 ft/row
TT42 - 2 Row	Contact Office	50 ft/row
TT48 - 1 Row	90 ft/row	150 ft/row
TT48 - 2 Row	Contact Office	45 ft/row

*3-row option is not available on 48-inch doors

SIZING YOUR SYSTEM

1. Measure the overall height of your opening
2. Measure the overall width of your opening
3. Construct frame according to manual (QM1100)

EXAMPLE:

- 40' long x 4 rows high
- 2 Zones
 - » Each Zone is controlled by one actuator

ORDER:

TT36ZD-2R (2 pcs)

TT36DK10-2R (8 pcs)

LA1211-250-70 (2 pcs)

